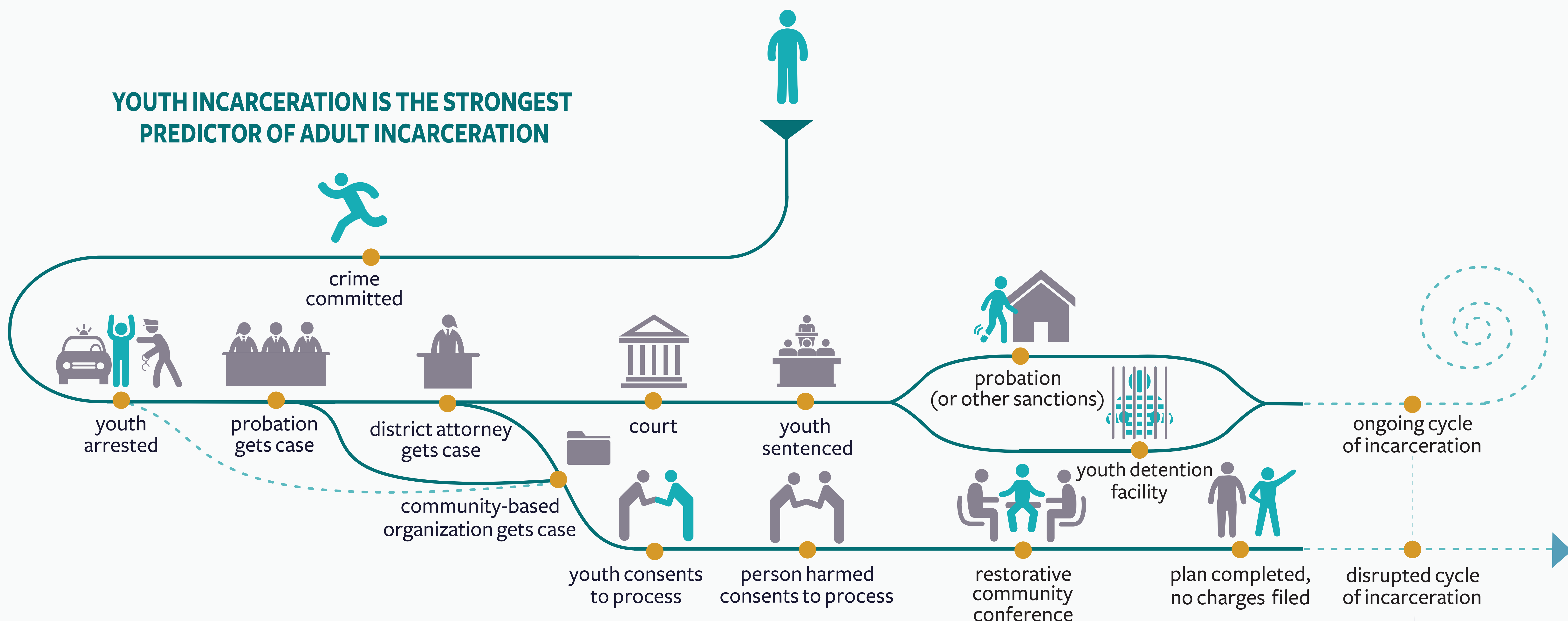
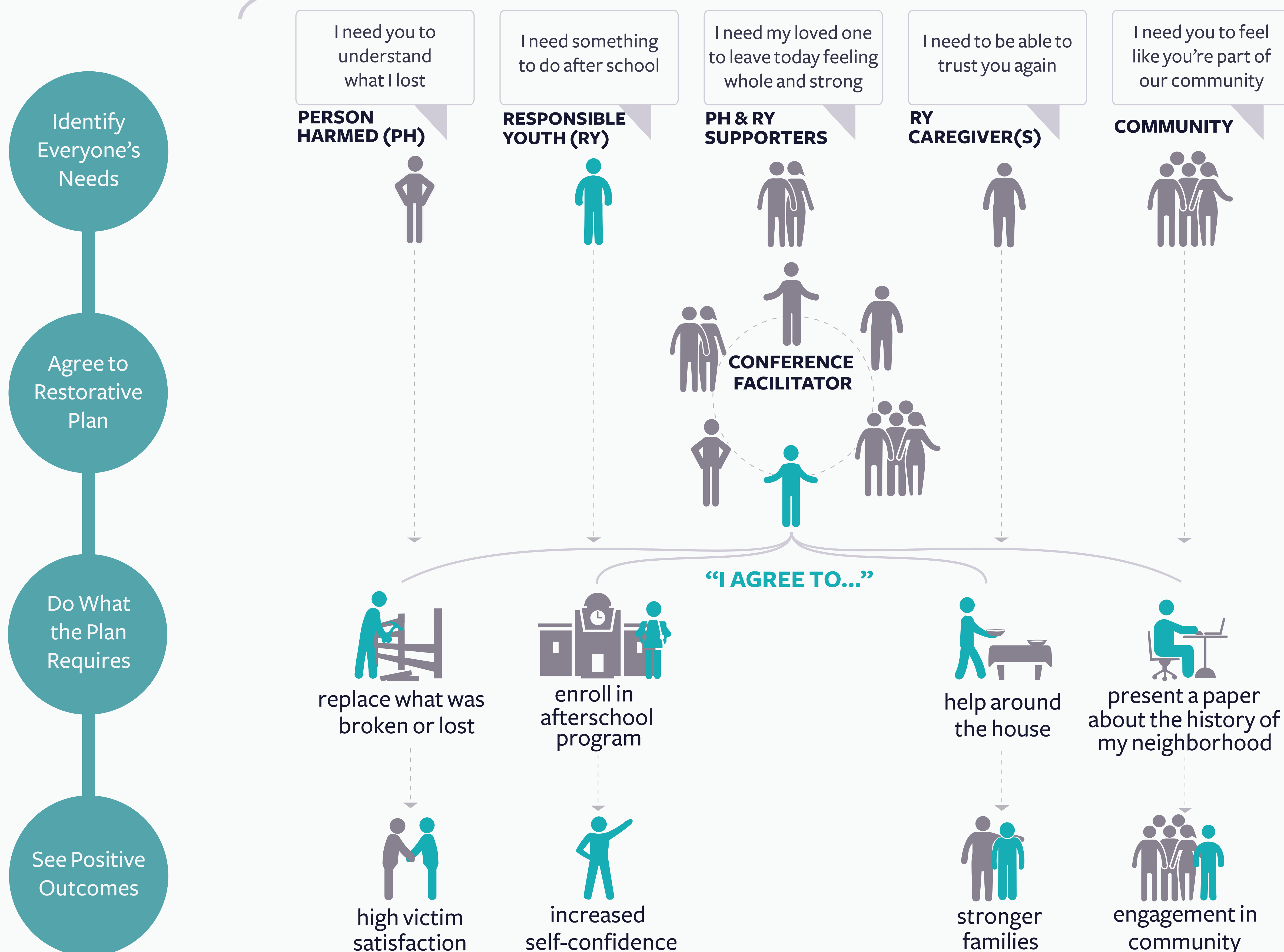


RESTORATIVE COMMUNITY CONFERRING IN ALAMEDA COUNTY

YOUTH INCARCERATION IS THE STRONGEST PREDICTOR OF ADULT INCARCERATION



RESTORATIVE COMMUNITY CONFERENCE



RESTORATIVE JUSTICE IMPROVES OUTCOMES

91% satisfaction for participating victims

44% reduction in recidivism for youth

\$ → \$
long term and short term cost savings

IMPACT/JUSTICE
A National Innovation and Research Center

communityworks
JUSTICE DEMANDS HUMANITY

Created by Eliza Sherpa November 2017